

The Newcastle



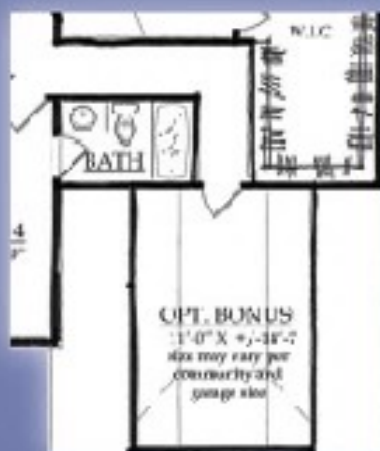
For more information visit
www.DriscollHomesInc.com

DH
DRISCOLL
H O M E S

Artist renderings and floor plans are for illustration purposes only and are subject to change. These plans are not to be reproduced, changed, or copied in any form or manner whatsoever. Nor are they to be assigned to any third party without first obtaining the express written permission and consent of Driscoll Homes, Inc.

All information contained herein was accurate at the time of publication. We reserve the right to make changes in design, materials and/or discontinue models without notice or obligation.

The Newcastle



Floor Plans

First Floor: 1802 Square Feet
Second Floor: 1362 Square Feet
Total: 3164 Square Feet

Opt. 3rd Bath + 112 Square Feet
Opt. Bonus Rm / 3rd Bath: +305 Square Feet

For more information visit
www.DriscollHomesInc.com

DH
DRISCOLL
HOMES

Artist renderings and floor plans are for illustration purposes only and are subject to change. These plans are not to be reproduced, changed, or copied in any form or manner whatsoever. Nor are they to be assigned to any third party without first obtaining the express written permission and consent of Driscoll Homes, Inc.

All information contained herein was accurate at the time of publication. We reserve the right to make changes in design, materials and/or discontinued models without notice or obligation.